

# 郴州功田电子陶瓷技术有限公司

CHENZHOU GONTCERA CERAMIC TECHNOLOGY CO., Ltd

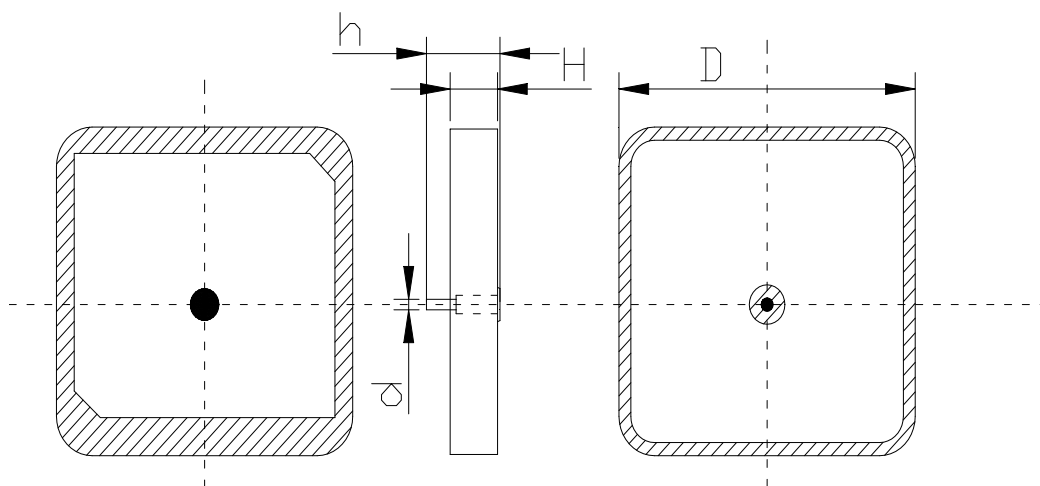
## 1 Performance Index

Frequency Range	GPS: 1568MHz±2MHz;
Impedance	50 Ω ±5 Ω
Polarization Mode	Right-Handed Circular Polarization
Axial Ratio	≤3dB
SWR	≤1.5

## 2 Structural Performance (mm)

(D×D×H)	20×20×4		
ceramic Chip Diameter	19.5±0.2	Ceramic Chip Thickness	4.0±0.1
the needle diameter	0.83±0.05	needle pin length	6.3±0.2

Product structure: feed point eccentric 1.5mm



## 3 Operating and Storage Temperature

Operating Temperature	-40℃ ~ +80℃
Storage Environment	Temperature: -10℃ ~ +40℃、Humidity: ≤75% ,it must be used up within 6 months after the goods received, the time exposed to air ≤12H